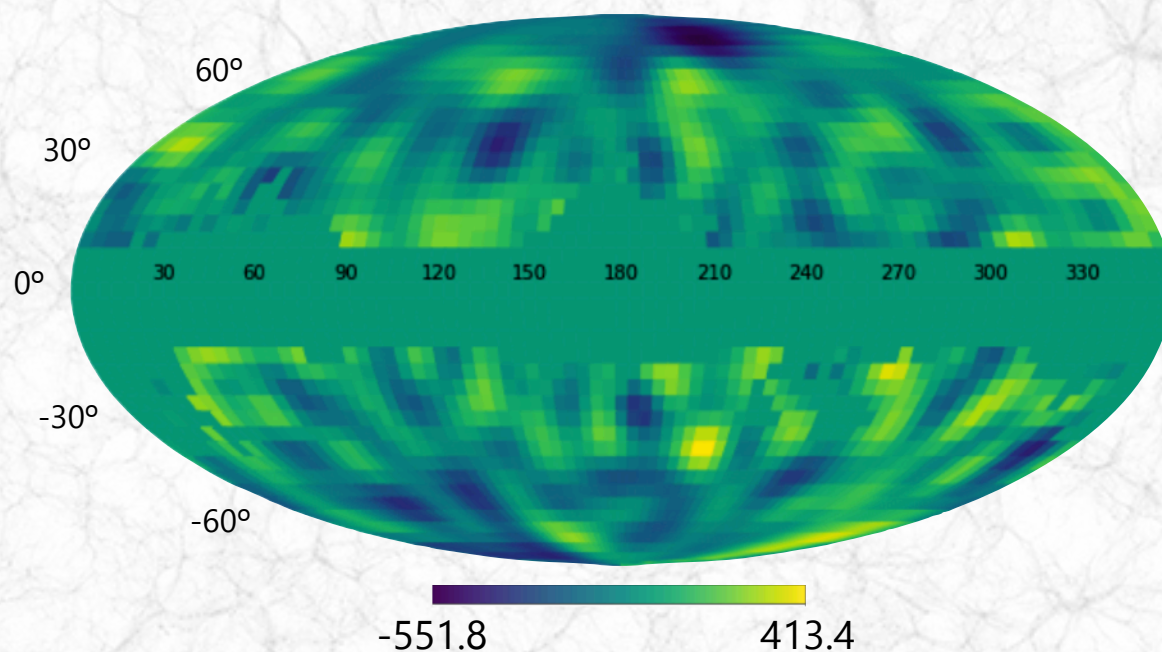


An Iterative Data Reconstruction Method for Incomplete Measurements in All-Sky Surveys

Suchetha Cooray, Tsutomu T. Takeuchi

- All-sky surveys are very important to understand the Universe
- However, our Galaxy will always be an obstacle to extragalactic observations
- We need a method that can **reconstruct physically meaningful information** in the regions with incomplete measurements

Simulated Observation



Reconstructed

