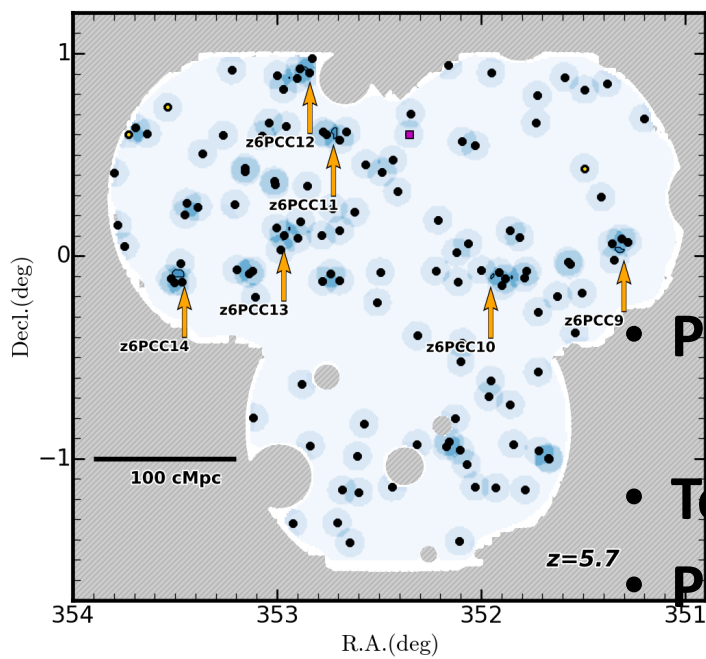
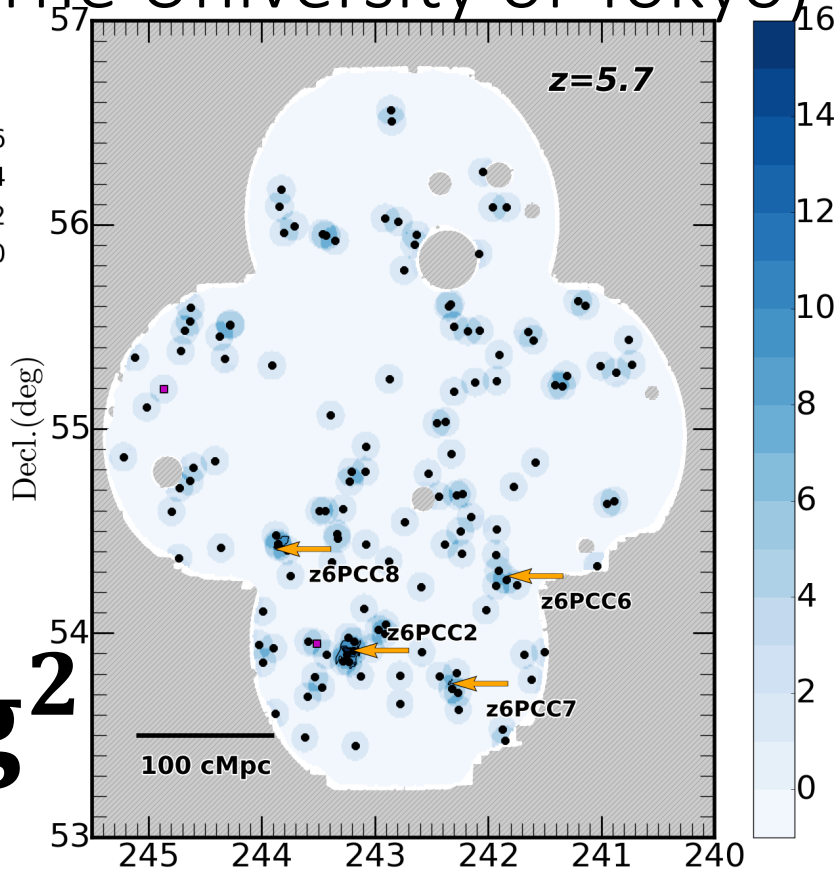
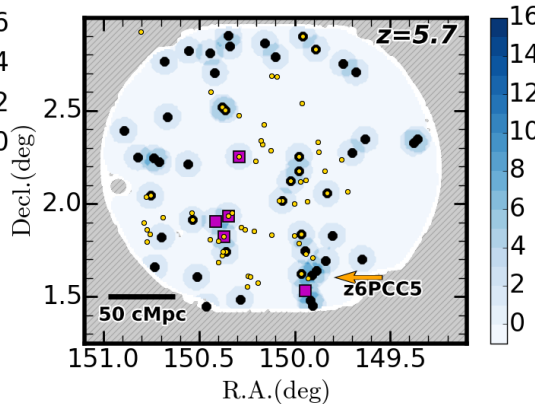
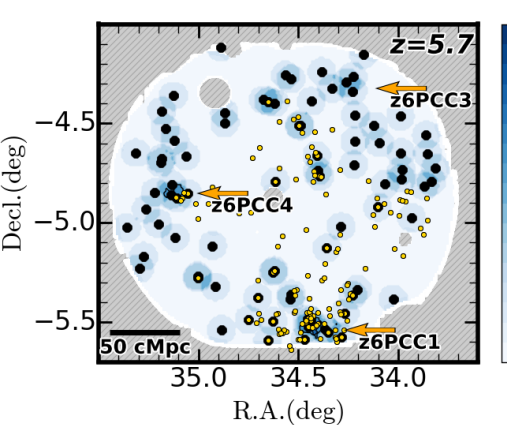


# すばるHSCを用いた原始銀河団の探査

# $z=5.7$

Ryo Higuchi (The University of Tokyo)



# 14deg<sup>2</sup>

- Protocluster Candidates (PCCs) at  $z=5.7$  and 6.6
- 14 (28) PCCs at  $z=5.7$  (6.6)
- Topology of Cosmic Reionization
- Protocluster Candidates with spec- $z$