

Detecting proto-Brightest Cluster Galaxy Candidates at $z \sim 4$ by Using HSC-SSP

Kei Ito^{1,2,3}(kei.ito@nao.ac.jp), Nobunari Kashikawa³, Jun Toshikawa^{3,4}, Roderik Overzier⁵, Hisakazu Uchiyama^{1,2}, Mariko Kubo² and HSC Project⁹⁶

Brightest Cluster Galaxies (BCGs)

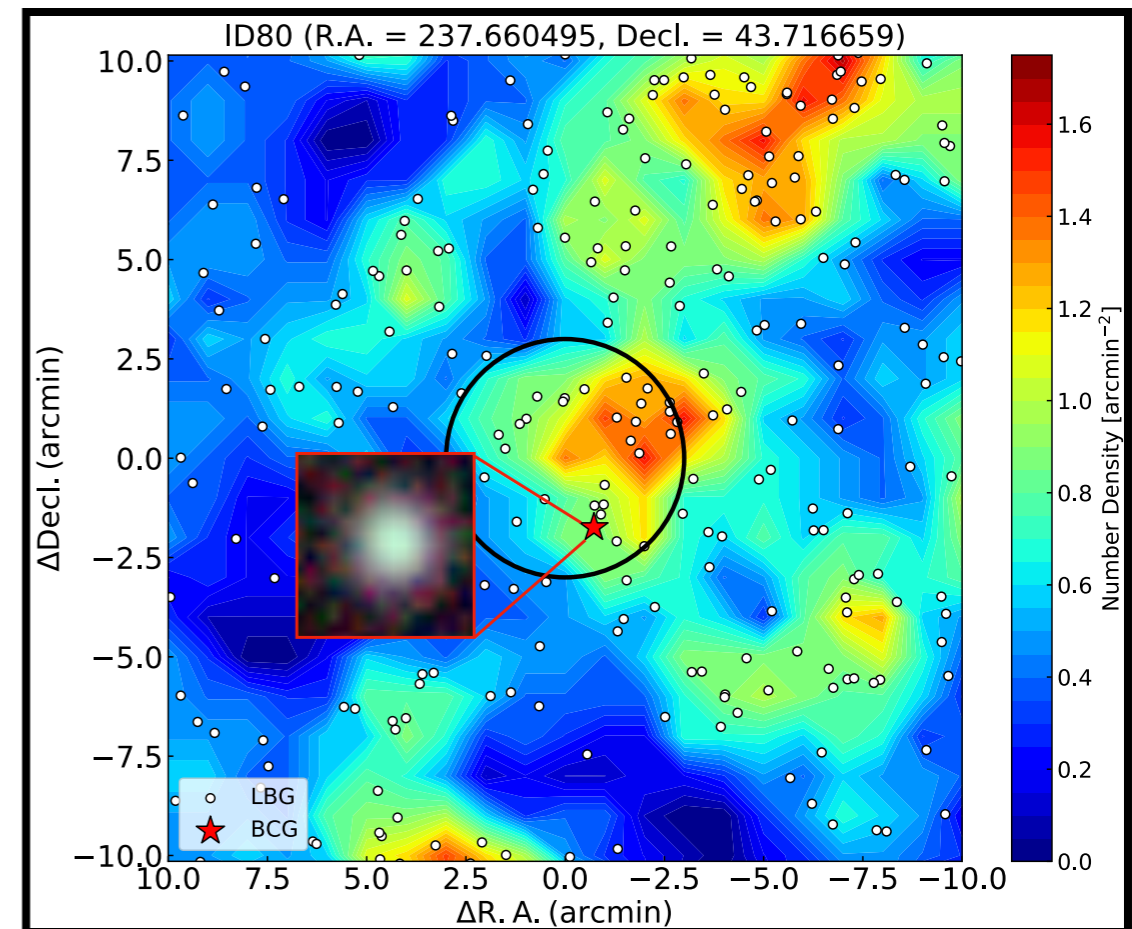
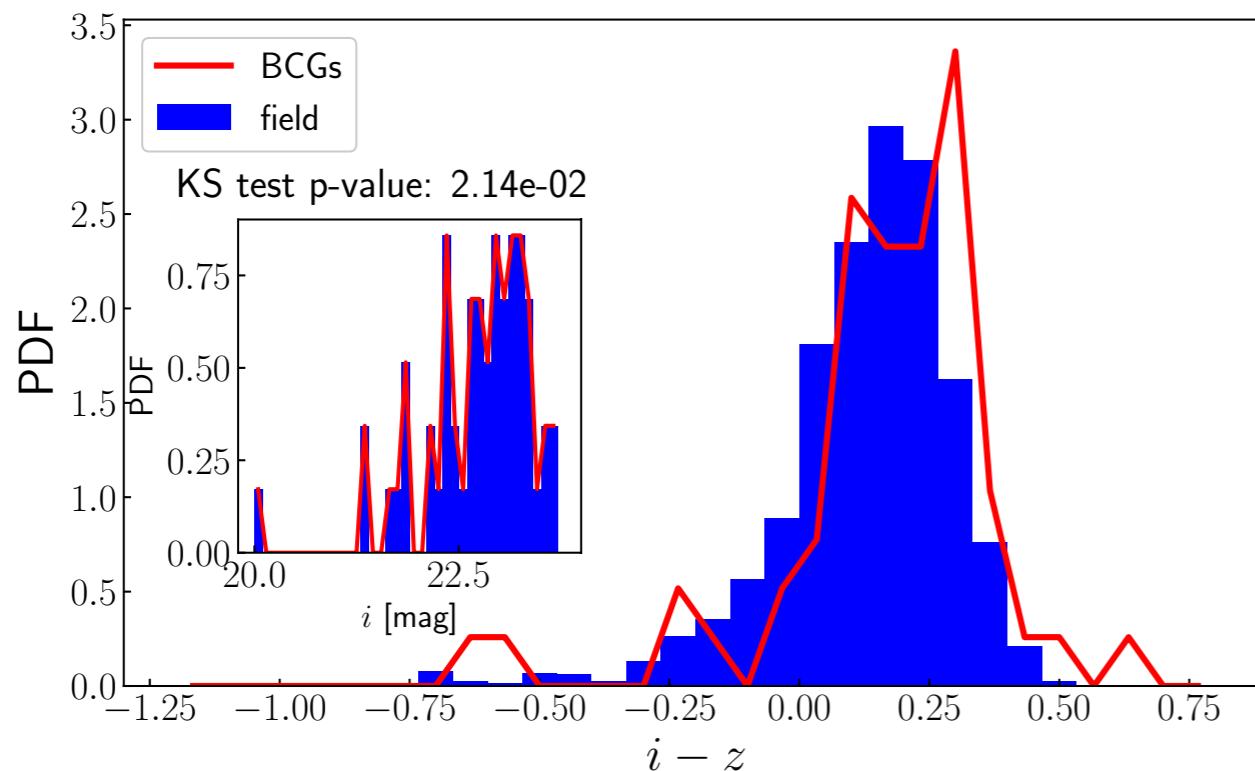
: The brightest and the most massive cluster galaxy

→ We are trying to detect progenitor of BCGs by using HSC protocluster at $z \sim 4$

We detected **58 samples** and they and their surrounding galaxy are...

1. **brighter** and
2. **redder**

than other regions.



Please come and see **P19!**