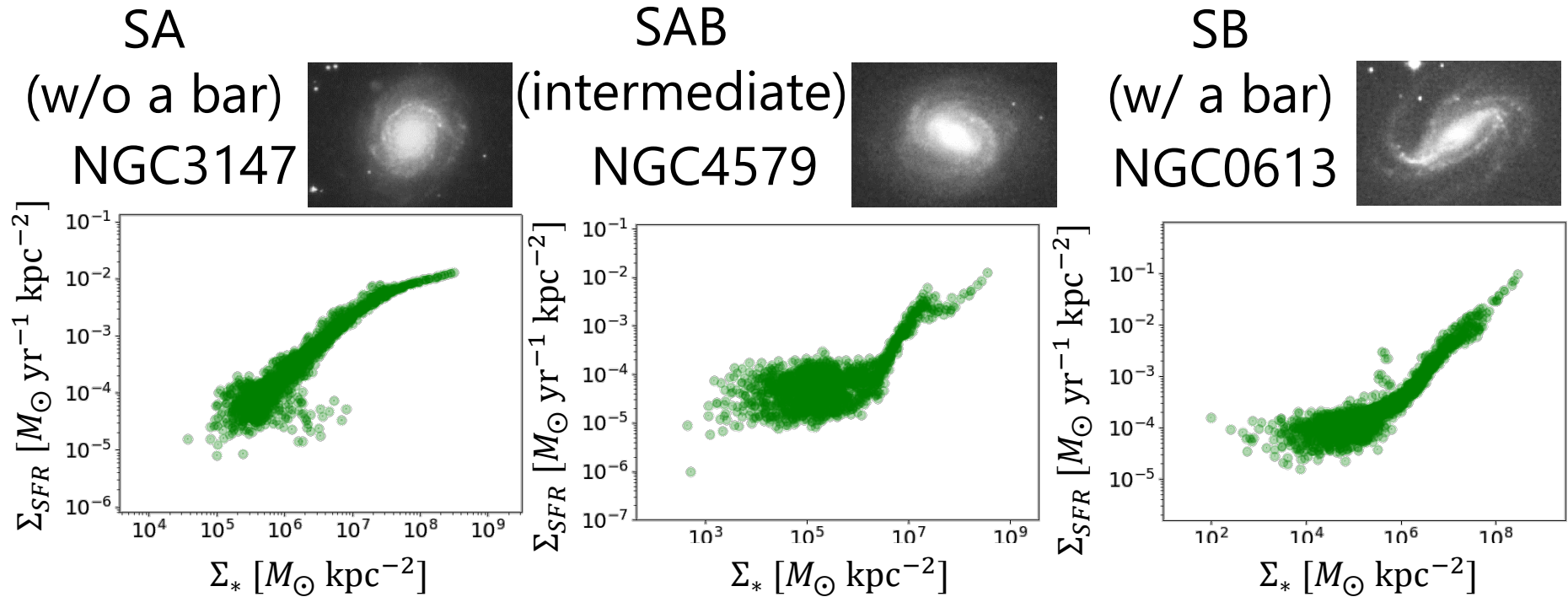


# P1 Spatially Resolved Scaling Laws in Galaxies

- Spatially resolved SFMS ( $1 \text{ kpc pix}^{-1}$ )  
SFMS is the correlation between SFR and stellar mass



We report out our discovery of a morphology dependence of the SFMS

# P1 Spatially Resolved Scaling Laws in Galaxies

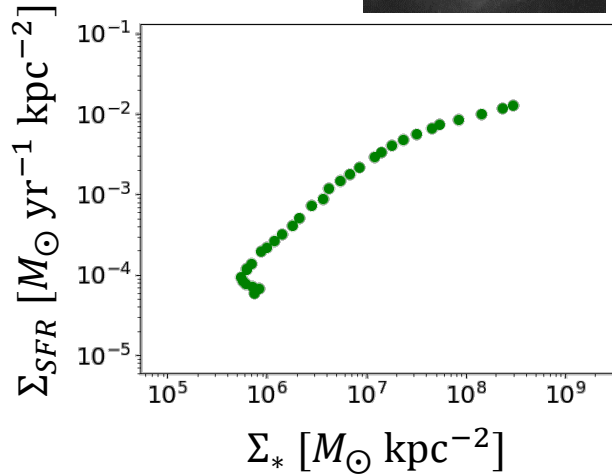
## ■ Spatially resolved SFMS

(the elliptical annuli whose semi-major axis is 1 kpc)

SA

(w/o a bar)

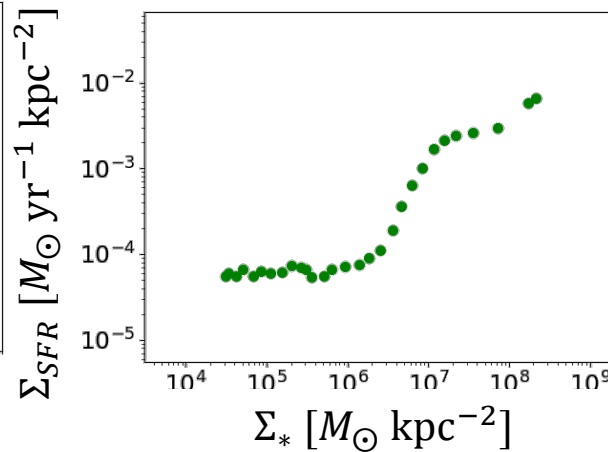
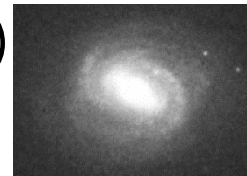
NGC3147



SAB

(intermediate)

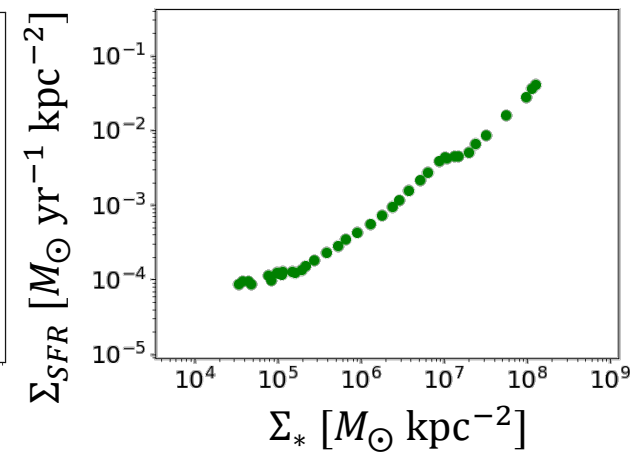
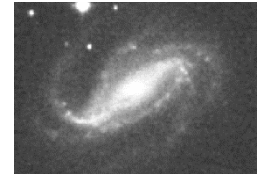
NGC4579



SB

(w/ a bar)

NGC0613



The barred galaxies have an increasing SFR toward the center of galaxies