

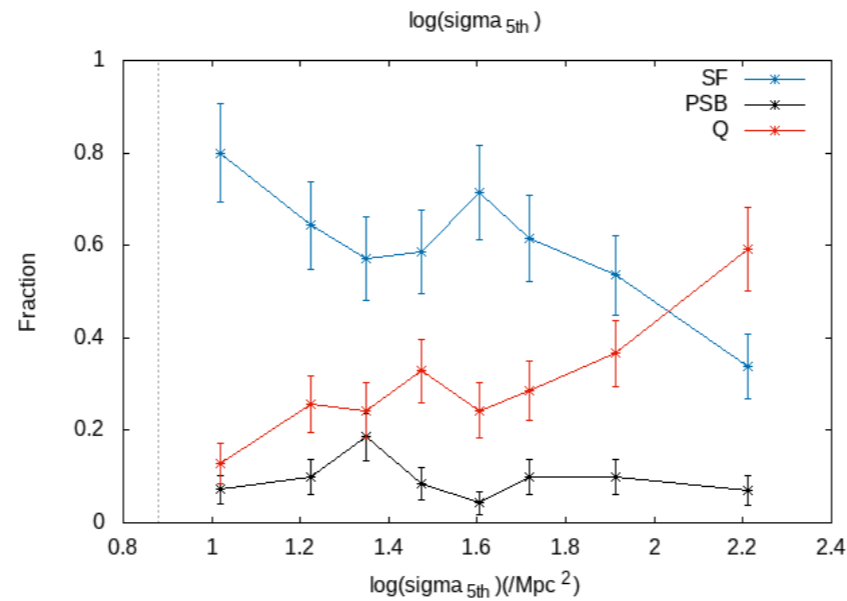
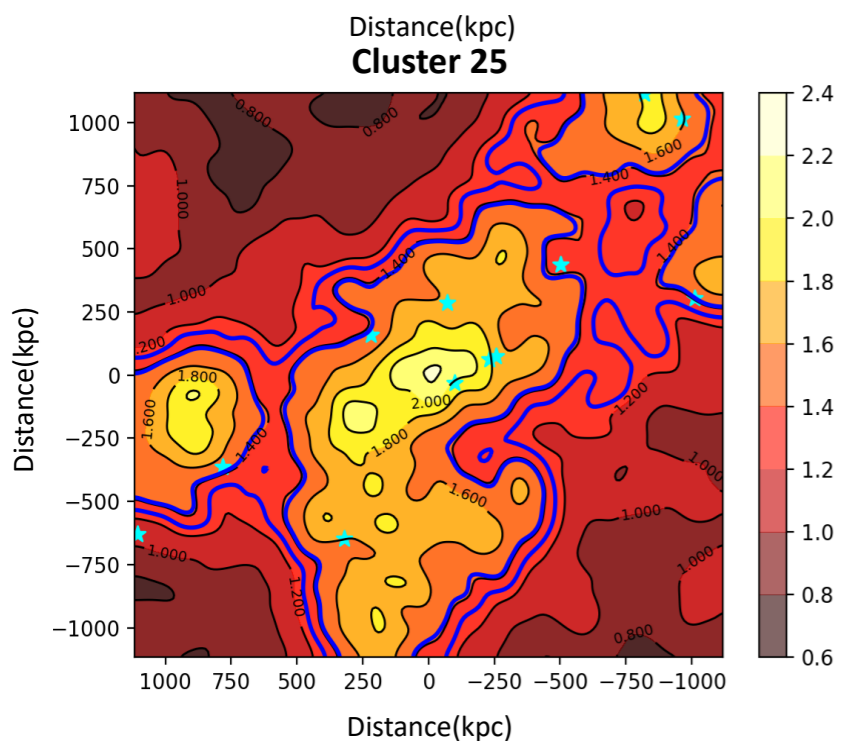
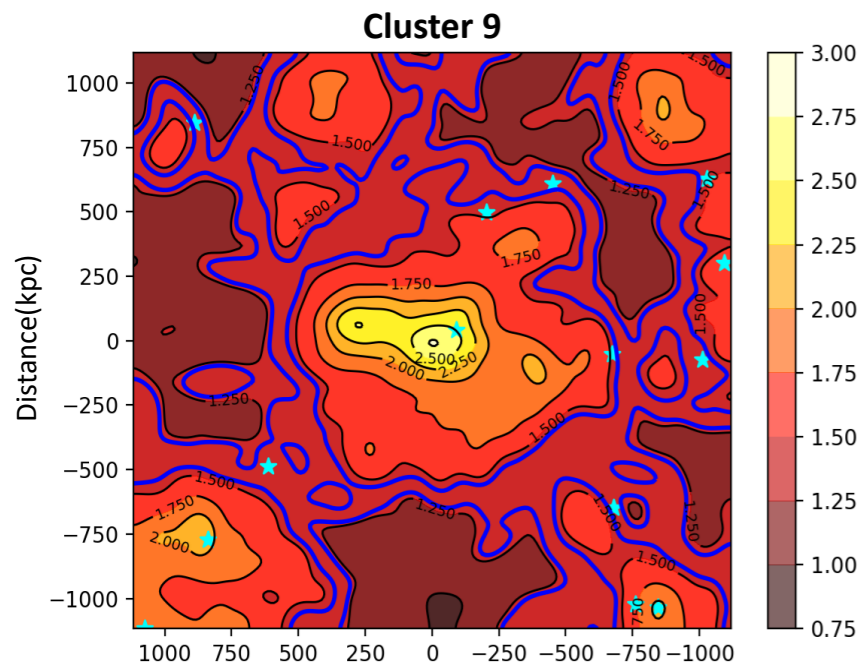
Environmental Quenching of Galaxies at $0.8 < z < 0.9$

Zhiying Mao, Tadayuki Kodama

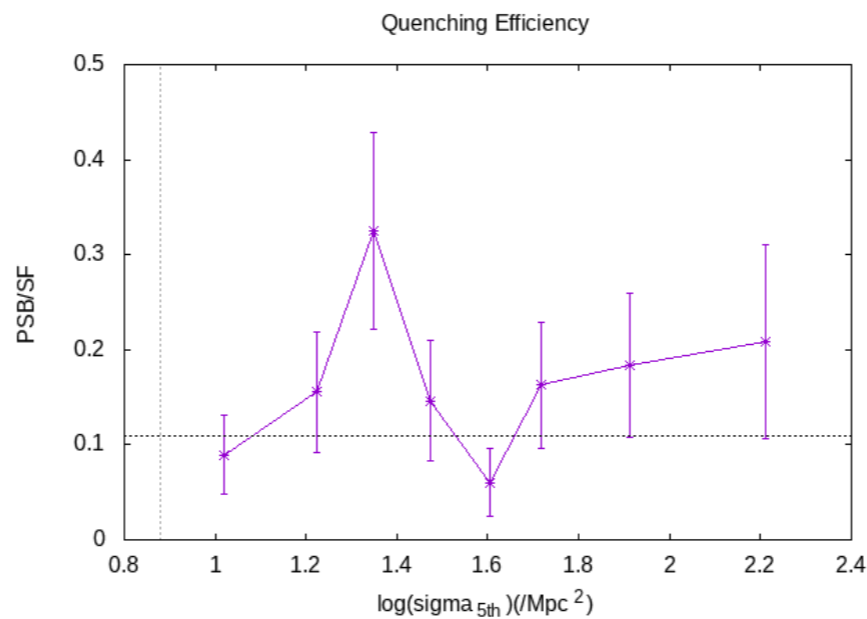
Tohoku University



P10



PSBs prefer **relatively dense** regions



Quenching efficiency peaks at

$$\Sigma_5 = 10^{1.4} / \text{Mpc}^2$$

- Σ_5 is an important factor that affects quenching process
- Galaxy-galaxy interaction might be main cause of galaxy quenching rather than ram pressure

PSBs reside in **outskirts** of clusters
 \Rightarrow they are less likely quenched by ram pressure